



CASE REPORT

SmartXide²
SmartXideTouch

MonaLisa *Touch*[®]



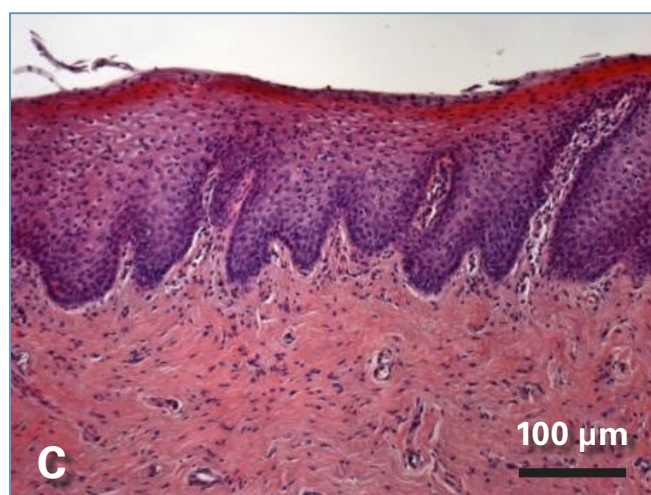
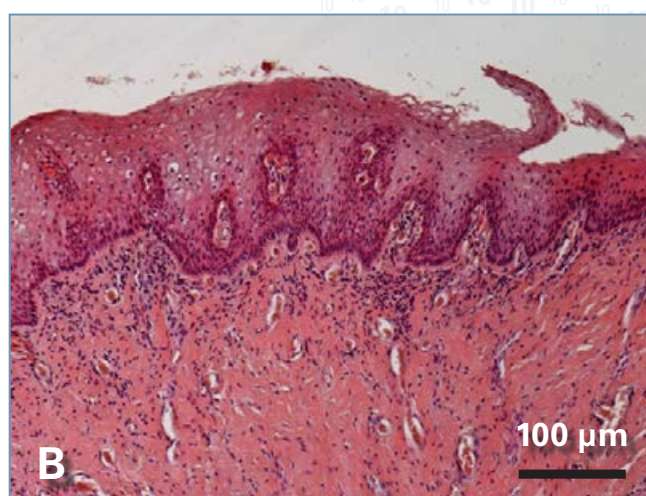
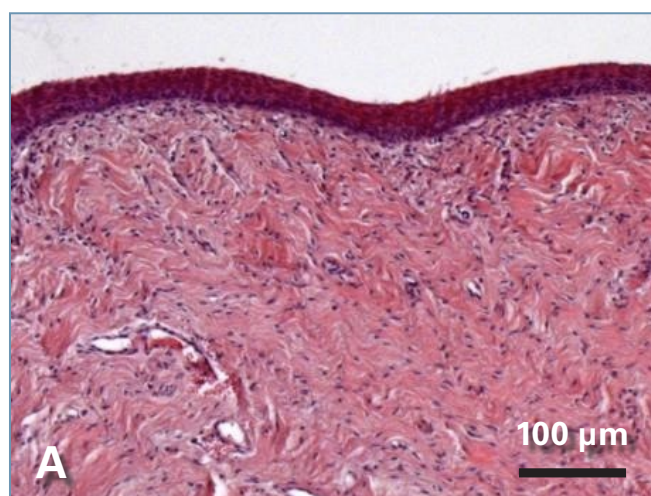
The Code of Excellence

Histological preparation of vaginal mucosa sections stained with haematoxylin and eosin (H&E)

Patient Data - ID: 1

Age: 54 - **Age at menopause:** 44 years old

Note: The patient has never used HRT



(A) Vaginal mucosa in the basal condition with a thinner epithelium typical of atrophic vaginitis.

(B) The same patient one month after the 1st *MonaLisa Touch*[®] session. It is evident the thicker epithelium of the mucosa.

(C) The same patient one month after the 2nd *MonaLisa Touch*[®] session. It is possible to observe a further thickening of the mucosa epithelium.

Courtesy of: **Prof. A. Calligaro.**

Professor of Histology and Embryology at the University of Pavia, Italy

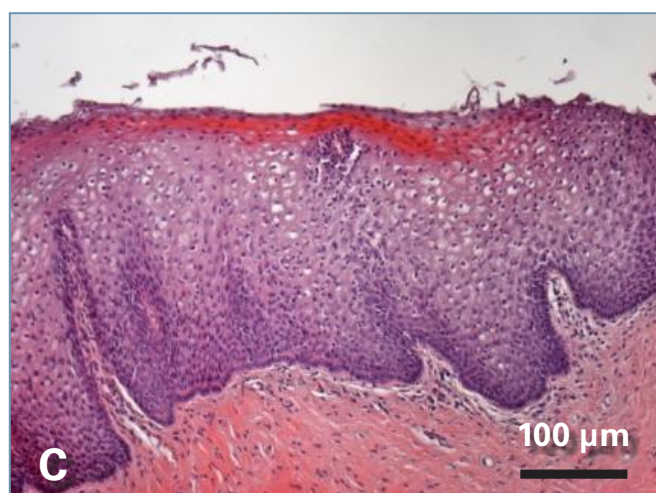
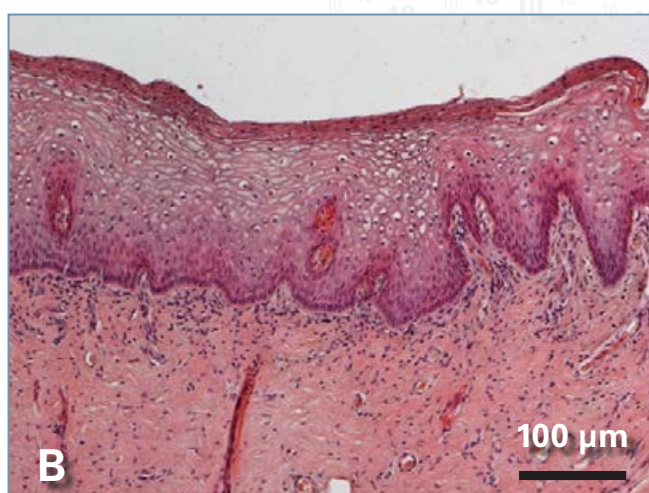
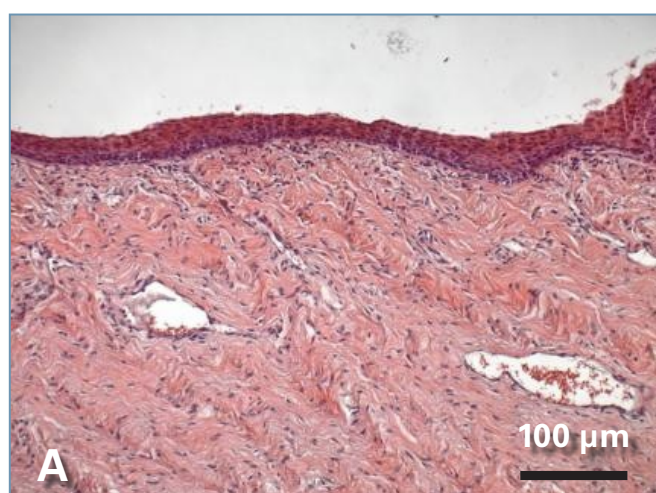
Pictures magnification 100x

Histological preparation of vaginal mucosa sections stained with haematoxylin and eosin (H&E)

Patient Data - ID: 1

Age: 54 - **Age at menopause:** 44 years old

Note: The patient has never used HRT



(A) Vaginal mucosa in the basal condition with a thinner epithelium typical of atrophic vaginitis.

(B) The same patient one month after the 1st *MonaLisa Touch*[®] session. It shows considerable thickening of the epithelium.

(C) The same patient one month after the 2nd *MonaLisa Touch*[®] session. This figure illustrates a further thickening of the epithelium.

Courtesy of: **Prof. A. Calligaro.**

Professor of Histology and Embryology at the University of Pavia, Italy

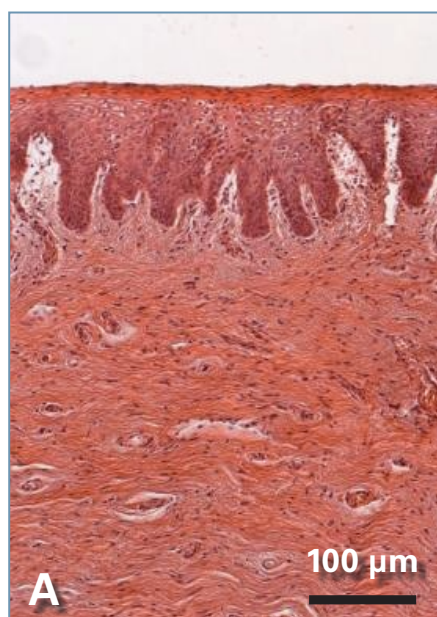
Pictures magnification 100x

Histological preparation of vaginal mucosa sections stained with haematoxylin and eosin (H&E)

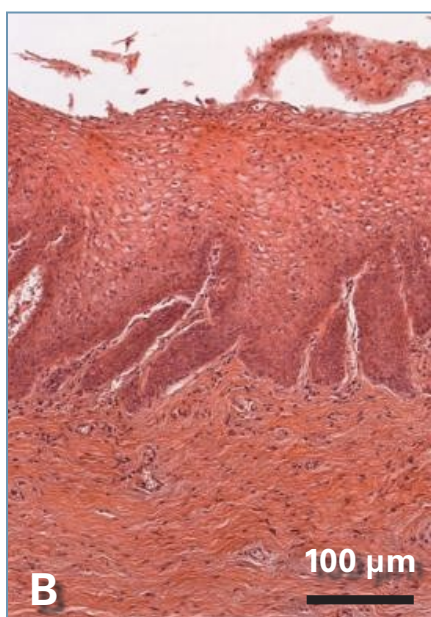
Patient Data - ID: 2

Age: 59 - **Age at menopause:** 48 years old

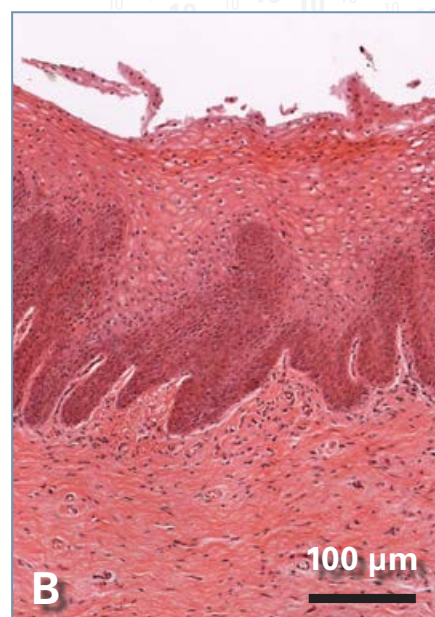
Note: The patient has never used HRT



(A) Vaginal mucosa in the basal condition. It shows a thinner epithelium and the presence of papillae. This morphological picture indicates vaginal atrophy at an early stage, gradually evolving towards a condition characterized by an epithelium formed of few cell layers and no papillae.



(B) & (C). The same patient one month after the 1st *MonaLisa Touch*[®] session **(B)** and the 2nd session **(C)**. The much thicker epithelium and shedding of considerable big cells from the free surface, together with the larger diameter of epithelial cells rich in glycogen, demonstrate the restored metabolic trophism and dynamics of the whole epithelium.



Courtesy of: **Prof. A. Calligaro.**

Professor of Histology and Embryology at the University of Pavia, Italy

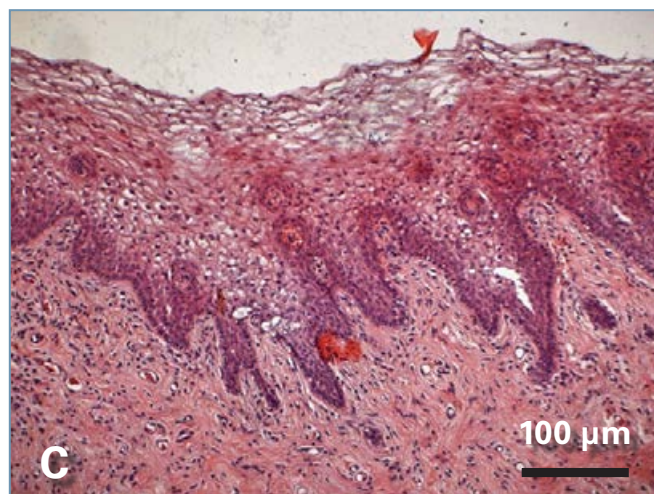
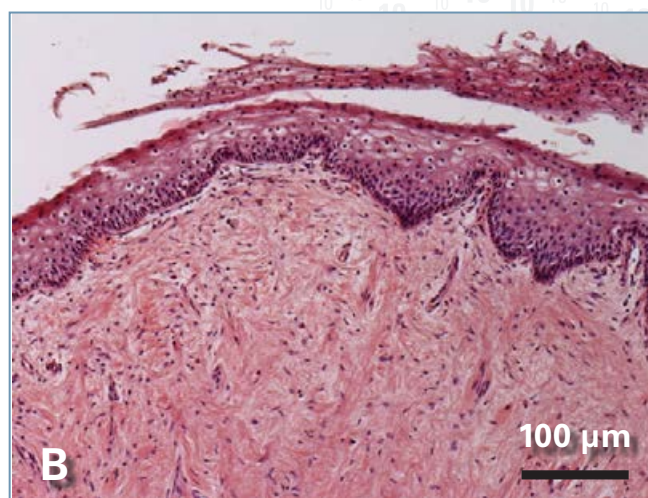
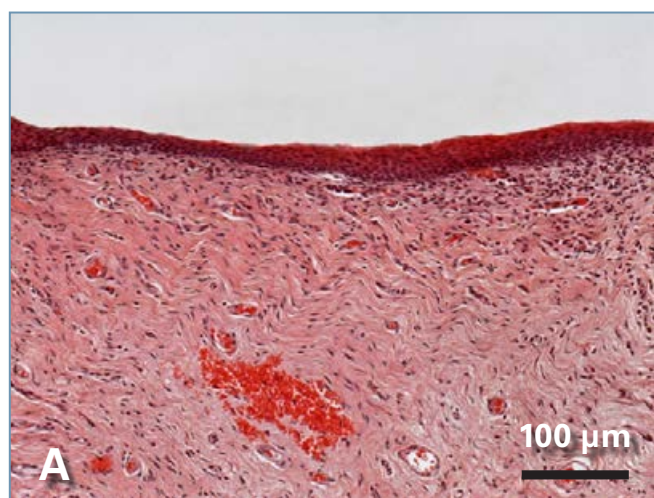
Pictures magnification 100x

Histological preparation of vaginal mucosa sections stained with haematoxylin and eosin (H&E)

Patient Data - ID: 3

Age: 55 - **Age at menopause:** 44 years old

Note: The patient has never used HRT. Breast cancer familiarity



(A) Vaginal mucosa in the basal condition with a thinner epithelium typical of atrophic vaginitis.

(B) The same patient one month after the 1st *MonaLisa Touch*[®] session. It shows evident thickening of the epithelium.

(C) The same patient one month after the 2nd *MonaLisa Touch*[®] session. The picture illustrates a further thickening of the epithelium.

Courtesy of: **Prof. A. Calligaro.**

Professor of Histology and Embryology at the University of Pavia, Italy

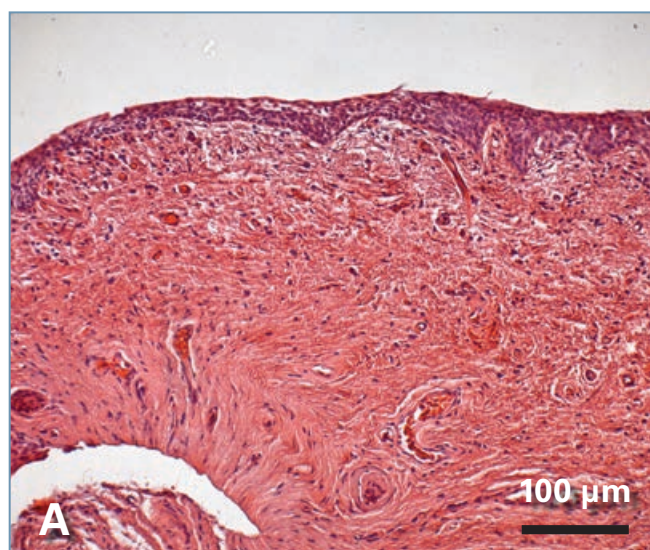
Pictures magnification 100x

Histological preparation of vaginal mucosa sections stained with haematoxylin and eosin (H&E)

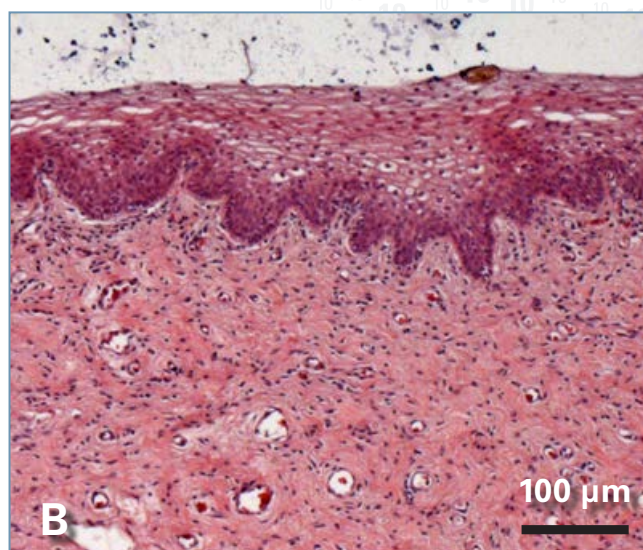
Patient Data - ID: 4

Age: 63 - **Age at menopause:** 49 years old

Note: The patient used HRT for 6 years, up to 55 years old



(A) Vaginal mucosa in the basal condition with a thinner epithelium typical of atrophic vaginitis.



(B) The same patient one month after the 2nd *MonaLisa Touch*[®] treatment session. The picture shows evident thickening of the epithelium.

Courtesy of: **Prof. A. Calligaro.**

Professor of Histology and Embryology at the University of Pavia, Italy

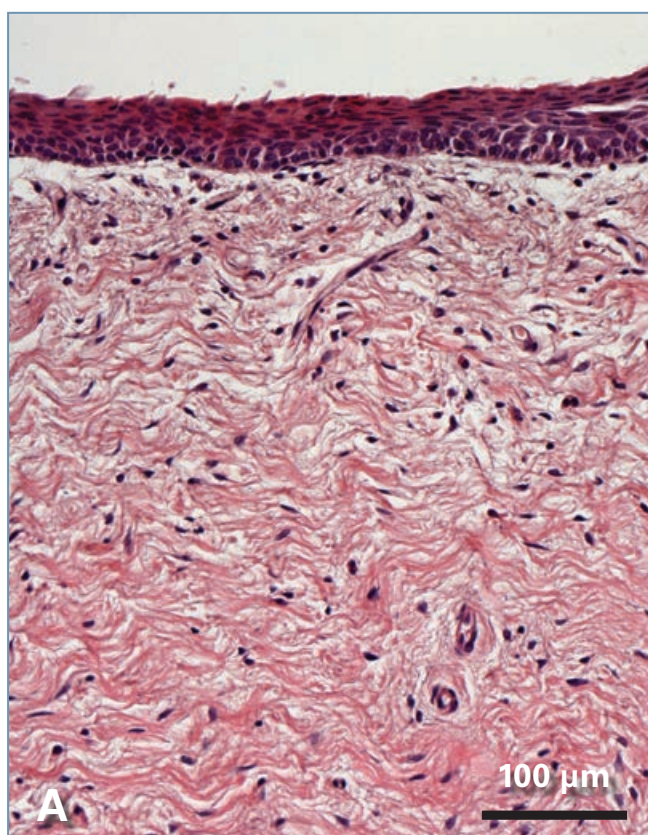
Pictures magnification 100x

Histological preparation of vaginal mucosa sections stained with haematoxylin and eosin (H&E)

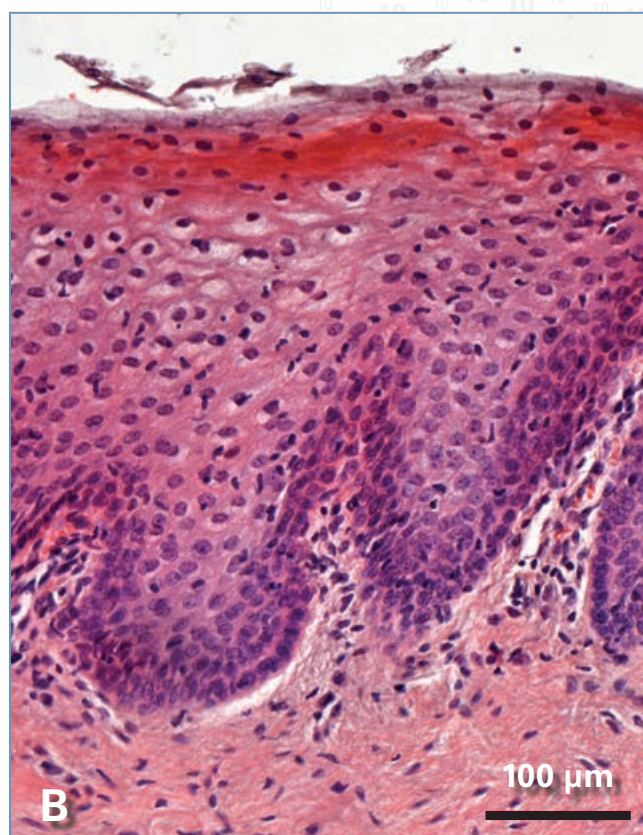
Patient Data - ID: 5

Age: 54 - **Age at menopause:** 53 years old

Note: The patient has never used HRT



(A) Vaginal mucosa in the basal condition with a thinner epithelium typical of atrophic vaginitis.



(B) Vaginal mucosa of the same patient one month after the 2nd *MonaLisa Touch*[®] session. The much thicker epithelium and shedding of numerous big cells from the free surface, together with the larger diameter of epithelial cells rich in glycogen, demonstrate the restored metabolic trophism and dynamics of the whole epithelium. Remark the connective tissue papillae projecting deeply into the underside of the epithelium.

Courtesy of: **Prof. A. Calligaro.**

Professor of Histology and Embryology at the University of Pavia, Italy

Pictures magnification 250x

Follow us on



The Code of Excellence

www.dekalaser.com

DEKA M.E.L.A. s.r.l.

Via Baldanzese, 17 - 50041 Calenzano (FI) - Italy
Ph. +39 055.88.74.942 - Fax +39 055.88.32.884